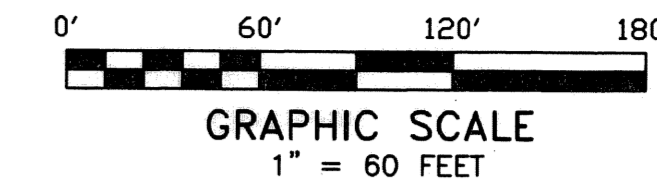


# HIPPOCRATES HEALTH INSTITUTE

BEING A REPLAT OF PART OF TRACT 7, BLOCK 3, PALM BEACH FARMS COMPANY PLAT NO. 3, PLAT BOOK 2, PAGES 45 TO 54 LYING IN SECTION 28, TOWNSHIP 43 SOUTH, RANGE 42 EAST, PALM BEACH COUNTY, FLORIDA

FEBRUARY 2005

SHEET 2 OF 2



P. 119

STATE OF FLORIDA  
COUNTY OF PALM BEACH : SS

This Plat was filed for record at \_\_\_\_\_ this \_\_\_\_\_ day of \_\_\_\_\_ 2005, A.D. and duly recorded in Plat Book No. \_\_\_\_\_ on Pages \_\_\_\_\_ and \_\_\_\_\_  
CHARLES R. BOAL  
DOROTHY H. WILKEN, Clerk

### LINE TABLE

LINE NUMBER	BEARING	DISTANCE
L-1	N45°23'48"W	59.41'
L-2	N31°50'25"E	46.36'
L-3	N84°44'19"E	86.81'
L-4	S26°31'20"E	46.07'
L-5	S38°52'35"W	59.70'
L-6	N22°20'10"E	13.31'
L-7	N64°31'21"E	22.50'
L-8	S46°22'20"E	33.69'
L-9	S38°20'18"E	28.20'
L-10	S20°20'11"W	26.80'
L-11	N82°46'14"W	39.11'
L-12	N08°14'27"E	29.38'
L-13	N03°38'26"E	31.78'
L-14	N13°28'51"E	7.95'
L-15	N45°08'14"E	11.11'
L-16	S39°30'02"E	18.04'
L-17	S17°22'11"E	27.37'
L-18	N39°37'58"E	21.09'
L-19	N37°46'38"E	35.98'
L-20	S25°23'37"W	24.56'
L-21	S10°46'43"W	44.31'
L-22	S54°39'17"W	41.99'
L-23	N28°20'37"W	37.97'
L-24	N34°45'42"E	34.63'
L-25	N09°04'36"E	50.64'
L-26	N14°45'33"E	43.23'
L-27	N85°14'58"E	22.92'
L-28	S86°30'59"E	23.83'
L-29	S08°45'24"E	32.72'
L-30	S02°03'10"E	71.68'
L-31	S41°49'20"W	41.05'
L-32	S07°57'08"W	85.74'
L-33	N51°24'28"W	49.09'
L-34	N17°38'52"E	89.82'
L-35	N80°59'10"E	45.99'
L-36	S31°59'19"E	9.34'
L-37	S48°26'30"W	43.71'
L-38	S84°26'28"E	95.51'
L-39	N85°59'08"E	64.52'
L-40	N05°02'18"W	46.29'
L-41	N89°03'02"E	111.04'
L-42	N89°03'02"E	36.05'
L-43	S00°59'42"E	5.00'
L-44	N07°38'10"W	13.90'
L-45	N88°59'23"E	24.04'
L-46	N01°00'37"W	42.72'
L-47	S70°16'03"E	32.75'
L-48	S25°39'40"W	2.64'

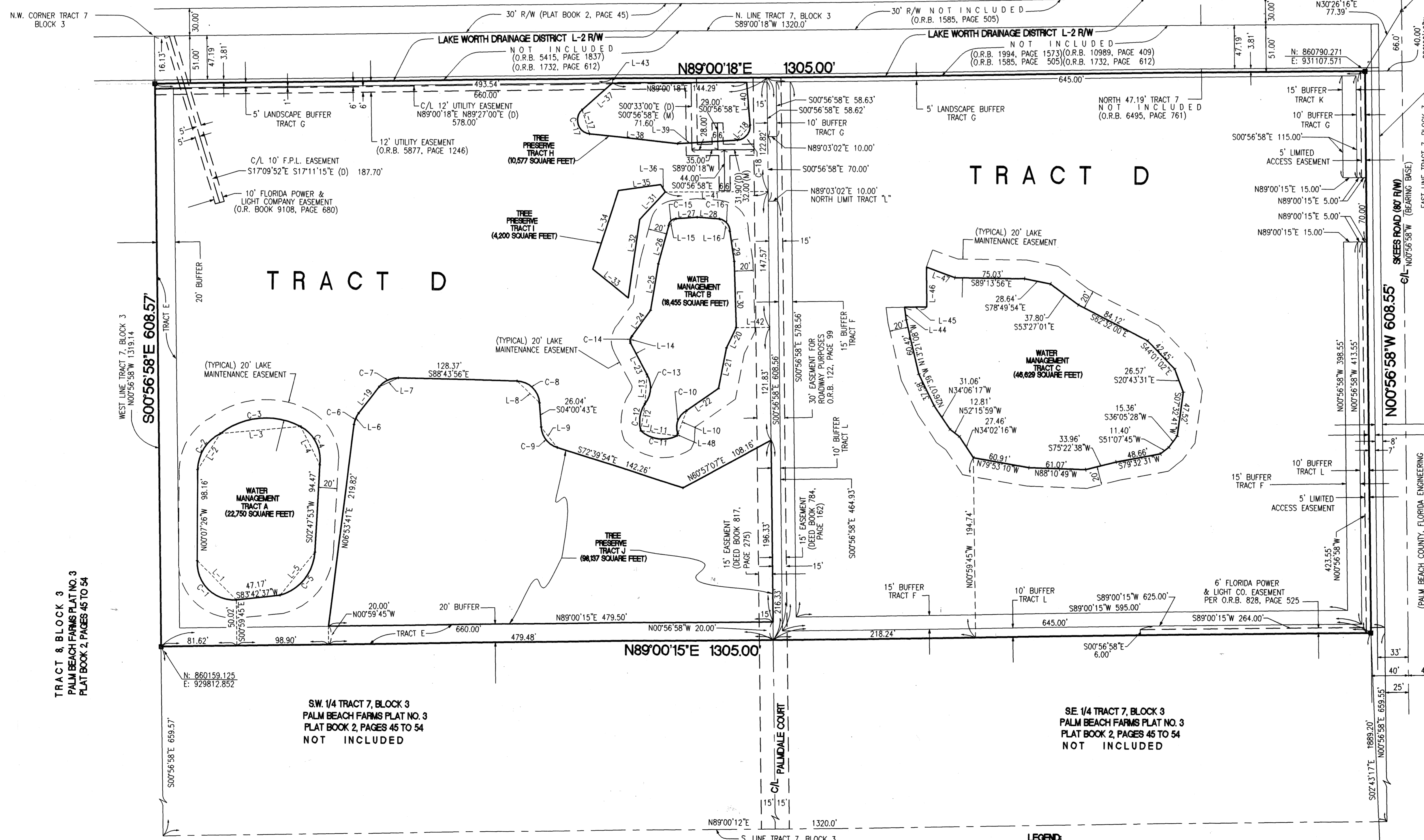
### CURVE TABLE

CURVE NUMBER	DELTA ANGLE	RADIUS	ARC LENGTH
C-1	Δ=97°30'55"	39.50'	67.23'
C-2	Δ=61°52'48"	45.09'	48.70'
C-3	Δ=65°42'36"	80.00'	91.75'
C-4	Δ=69°52'52"	40.22'	49.05'
C-5	Δ=70°44'33"	51.56'	63.66'
C-6	Δ=30°52'57"	25.00'	13.48'
C-7	Δ=53°29'26"	25.00'	23.34'
C-8	Δ=84°43'13"	25.00'	36.97'
C-9	Δ=68°39'10"	25.00'	29.96'
C-10	Δ=81°12'16"	20.59'	29.18'
C-11	Δ=67°56'54"	34.99'	41.49'
C-12	Δ=49°13'18"	35.27'	30.30'
C-13	Δ=70°01'36"	27.69'	33.84'
C-14	Δ=77°50'00"	6.33'	8.60'
C-15	Δ=87°18'00"	8.05'	12.26'
C-16	Δ=83°41'52"	13.52'	19.74'
C-17	Δ=131°37'22"	15.00'	34.46'
C-18	Δ=89°20'31"	15.00'	23.39'

THIS INSTRUMENT WAS PREPARED BY RICHARD A. MIXON, IN AND FOR THE OFFICE OF MIXON LAND SURVEYING, INC. 311 WEST INDIANTOWN ROAD, SUITE 3, JUPITER, FLORIDA 33458

**MIXON LAND SURVEYING, INC.**  
311 WEST INDIANTOWN ROAD, SUITE 3  
JUPITER, FLORIDA 33458  
(561) 747-6046  
CERTIFICATE NO. LB 4199

**HIPPOCRATES HEALTH INSTITUTE**



**LEGEND:**

- = SET PERMANENT REFERENCE MONUMENT (P.R.M.) LS 3335
- (D) = DESCRIPTION
- (M) = MEASURED
- Δ = DELTA ANGLE
- R = RADIUS
- F.P.L. = FLORIDA POWER AND LIGHT
- C/L = CENTERLINE
- R/W = RIGHT OF WAY
- O.R.B. = OFFICIAL RECORD BOOK
- L = ARC LENGTH

SUBDIVISION Hippocrates Health Institute  
BOOK 104-  
PAGE 119  
FLOOD ZONE B  
QUAD # 46  
SEC 27-119  
TAX 21B  
PUD NAME

TRACT 8 & BLOCK 3  
PALM BEACH FARMS PLAT NO. 3  
PLAT BOOK 2, PAGES 45 TO 54

SW 1/4 TRACT 7, BLOCK 3  
PALM BEACH FARMS PLAT NO. 3  
PLAT BOOK 2, PAGES 45 TO 54  
NOT INCLUDED

SE 1/4 TRACT 7, BLOCK 3  
PALM BEACH FARMS PLAT NO. 3  
PLAT BOOK 2, PAGES 45 TO 54  
NOT INCLUDED

N: 860856.9920  
E: 931146.7749  
FOUND BRASS DISK IN CUTOUT  
PBF-7, PALM BEACH COUNTY  
CONTROL STATION

NOT INCLUDED  
PER DEED BOOK 964, PAGE 466

NOT INCLUDED  
PER O.R.B. 7126, PAGE 1721

(PALM BEACH COUNTY, FLORIDA ENGINEERING  
DEPARTMENT DRAWING NO. S3-82-688R/W)